



## PharmLabs San Diego Certificate of Analysis

3421 Hancock St, Second Floor, San Diego, CA 92110 | License: C8-17-0000008-TEMP  
 ISO/IEC 17025:2005 Certification L17-427-1 | Accreditation #85368  
[https://www.dropbox.com/s/4ha8tegakj9zj8b/L17-427-1\\_PharmLabs\\_San\\_Diego.pdf?dl=0](https://www.dropbox.com/s/4ha8tegakj9zj8b/L17-427-1_PharmLabs_San_Diego.pdf?dl=0)

Sample **Vanilla Coconut Salve**

Sample ID <b>SD181012-014 (30717)</b>	Matrix <b>Topical (Other Cannabis Product)</b>	Batch ID <b>06281803</b>
Tested for <b>MathCo Health Corp</b>		
Sampled -	Received <b>Jul 12, 2019</b>	Reported <b>Jul 19, 2019</b>
Analyses executed <b>CAN, TER, MIBNIG, PES</b>		

### \*CAN - Cannabinoid Profile Analysis

Analyzed **Jul 16, 2019** | Instrument **HPLC** | Method **M-004, SOP-009, SOP-015, SOP-019**

Analyte	LOD ppm	LOQ ppm	Result %	Result mg/g	Result mg/Unit
Cannabidiolic Acid (CBDA)	0.01	0.02	<b>0.01</b>	<b>0.06</b>	<b>0.06</b>
Cannabigerol (CBG)	0.03	0.09	<b>0.01</b>	<b>0.06</b>	<b>0.06</b>
Cannabidiol (CBD)	0.01	0.04	<b>0.52</b>	<b>5.15</b>	<b>5.15</b>
Cannabinol (CBN)	0.03	0.1	<b>0.00</b>	<b>0.02</b>	<b>0.02</b>
Tetrahydrocannabinol (THC)	0.04	0.15	<b>0.02</b>	<b>0.16</b>	<b>0.16</b>
Tetrahydrocannabinolic Acid (THCA)	0.03	0.11	<b>ND</b>	<b>ND</b>	<b>ND</b>
<b>Total THC (THCa * 0.877 + THC)</b>			<b>0.02</b>	<b>0.16</b>	<b>0.16</b>
<b>Total CBD (CBDA * 0.877 + CBD)</b>			<b>0.52</b>	<b>5.20</b>	<b>5.2</b>

### MIBNIG - Microbial Testing Analysis

Analyzed **Jul 18, 2019** | Instrument **Plating and ELISA Reader** | Method **SOP-004 & SOP-011**

Analyte	Result CFU/g	Limit	Analyte	Result CFU/g	Limit
Shiga toxin-producing Escherichia Coli	<b>Negative</b>	ND per 1 gram	Salmonella spp.	<b>Negative</b>	ND per 1 gram

### PES - Pesticides Screening Analysis

Analyzed **Jul 18, 2019** | Instrument **LC/MSMS GC/MSD** | Method

Analyte	LOD ug/g	LOQ ug/g	Result ug/g	Limit ug/g	Analyte	LOD ug/g	LOQ ug/g	Result ug/g	Limit ug/g
Aldicarb	0.025	0.1	<b>ND</b>	0.025	Carbofuran	0.025	0.1	<b>ND</b>	0.025
Dimethoate	0.025	0.1	<b>ND</b>	0.025	Etofenprox	0.025	0.1	<b>ND</b>	0.025
Fenoxycarb	0.025	0.1	<b>ND</b>	0.025	Thiacloprid	0.025	0.1	<b>ND</b>	0.025
Daminozide	0.025	0.1	<b>ND</b>	0.025	Dichlorvos	0.025	0.1	<b>ND</b>	0.025
Imazalil	0.025	0.1	<b>ND</b>	0.025	Methiocarb	0.025	0.1	<b>ND</b>	0.025
Spiroxamine	0.025	0.1	<b>ND</b>	0.025	Coumaphos	0.025	0.1	<b>ND</b>	0.025
Fipronil	0.025	0.1	<b>ND</b>	0.025	Paclobutrazol	0.025	0.1	<b>ND</b>	0.025
Chlorpyrifos	0.025	0.1	<b>ND</b>	0.025	Ethoprophos (Prophos)	0.025	0.1	<b>ND</b>	0.025
Baygon (Propoxur)	0.025	0.1	<b>ND</b>	0.025	Chlordane	0.025	0.1	<b>ND</b>	0.025
Chlorfenapyr	0.025	0.1	<b>ND</b>	0.025	Methyl Parathion	0.025	0.1	<b>ND</b>	0.025
Mevinphos	0.025	0.1	<b>ND</b>	0.025	Abamectin	0.025	0.05	<b>ND</b>	0.3
Acephate	0.025	0.05	<b>ND</b>	5	Acetamiprid	0.025	0.05	<b>ND</b>	5
Azoxystrobin	0.025	0.05	<b>ND</b>	40	Bifenazate	0.025	0.05	<b>ND</b>	5
Bifenthrin	0.025	0.05	<b>ND</b>	0.5	Boscalid	0.025	0.05	<b>ND</b>	10
Carbaryl	0.025	0.05	<b>ND</b>	0.5	Chlorantraniliprole	0.025	0.05	<b>ND</b>	40
Clofentezine	0.025	0.05	<b>ND</b>	0.5	Diazinon	0.025	0.05	<b>ND</b>	0.2
Dimethomorph	0.025	0.05	<b>ND</b>	20	Etoxazole	0.025	0.05	<b>ND</b>	1.5
Fenpyroximate	0.025	0.05	<b>ND</b>	2	Fonicamid	0.025	0.05	<b>ND</b>	2
Fludioxonil	0.025	0.05	<b>ND</b>	30	Hexythiazox	0.025	0.05	<b>ND</b>	2
Imidacloprid	0.025	0.05	<b>ND</b>	3	Kresoxim-methyl	0.025	0.05	<b>ND</b>	1
Malathion	0.025	0.05	<b>ND</b>	5	Metalaxyl	0.025	0.05	<b>ND</b>	15

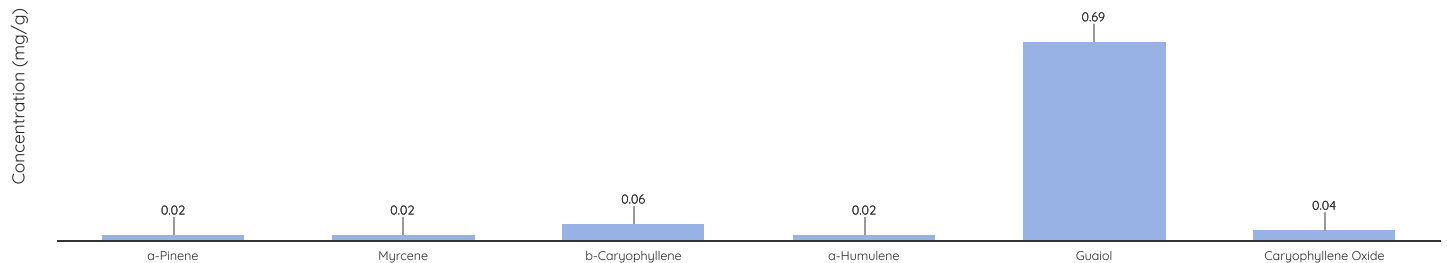
Methomyl	0.025	0.05	ND	0.1	Myclobutanil	0.025	0.05	ND	9
Naled	0.025	0.05	ND	0.5	Oxamyl	0.025	0.05	ND	0.2
Permethrin	0.025	0.05	ND	20	Phosmet	0.025	0.05	ND	0.2
Piperonyl Butoxide	0.025	0.05	ND	8	Propiconazole	0.025	0.05	ND	20
Prallethrin	0.025	0.05	ND	0.4	Pyrethrin	0.025	0.05	ND	1
Pyridaben	0.025	0.05	ND	3	Spinosad A	0.025	0.05	ND	3
Spinosad D	0.025	0.05	ND	3	Spiromesifen	0.025	0.05	ND	12
Spirotetramat	0.025	0.05	ND	13	Tebuconazole	0.025	0.05	ND	2
Thiamethoxam	0.025	0.05	ND	4.5	Trifloxystrobin	0.025	0.05	ND	30
Acequinocyl	0.025	0.05	ND	4	Captan	0.025	0.05	ND	5
Cypermethrin	0.025	0.05	ND	1	Cyfluthrin	0.025	0.05	ND	1
Fenhexamid	0.025	0.05	ND	10	Spinetoram JL	0.025	0.05	ND	3
Pentachloronitrobenzene	0.025	0.05	ND	0.2					

## TER - Terpenes Testing Analysis

Analyzed **Jul 18, 2019** | Instrument **GC/FID with Headspace Analyzer** | Method **M-003, SOP-017, SOP-014, SOP-021**

Analyte	(%)	(mg/g)	Analyte	(%)	(mg/g)
$\alpha$ -Pinene ( $\alpha$ -Pin)	0.00	0.02	Camphene (Cam)	ND	ND
Myrcene (Myr)	0.00	0.02	b-Pinene (b-Pin)	ND	ND
3-Carene (3-Car)	ND	ND	$\alpha$ -Terpinene ( $\alpha$ -Ter)	ND	ND
$\alpha$ -Ocimene ( $\alpha$ -Oci)	ND	ND	Limonene (Lim)	ND	ND
p-Cymene (p-Cym)	ND	ND	b-Ocimene (b-Oci)	ND	ND
Eucalyptol (Euc)	ND	ND	g-Terpinene (g-Ter)	ND	ND
Terpenolene (Terp)	ND	ND	Linalool (Lin)	ND	ND
Isopulegol (Isop)	ND	ND	Geraniol (Gera)	ND	ND
b-Caryophyllene (b-Cary)	0.01	0.06	$\alpha$ -Humulene (Hum)	0.00	0.02
cis-Nerolidol (ci-Ner)	ND	ND	trans-Nerolidol (tr-Ner)	ND	ND
Guaiol (Gua)	0.07	0.69	Caryophyllene Oxide (CarOx)	0.00	0.04
$\alpha$ -bisabolol ( $\alpha$ -Bbis)	ND	ND			
<b>Total Terpene Concentration</b>				<b>0.09 %</b>	<b>0.85 mg/g</b>

## Terpene Testing - Visualization



**NT** Not Reported  
**ND** Not Detected  
**LOD** Limit of Detection  
**LOQ** Limit of Quantification  
**<LOQ** Detected  
**>ULOL** Above upper limit of linearity  
**CFU/g** Colony Forming Units per 1 gram  
**TNTC** Too Numerous to Count



(<http://www.pjlabs.com>)

Accreditation #85368

([https://www.dropbox.com/s/4ha8teqkq9zj8b/L17-427-1\\_PharmLabs\\_San\\_Diego.pdf?dl=0](https://www.dropbox.com/s/4ha8teqkq9zj8b/L17-427-1_PharmLabs_San_Diego.pdf?dl=0))



Scan the QR code to verify authenticity.

Authorized Signature

*Melissa Nutter*

Melissa Nutter - Lab Director  
 Fri, 19 Jul 2019 15:36:25 -0700

PharmLabs San Diego | 3421 Hancock St, Second Floor, San Diego, CA 92110 | 619.356.0898 | ISO/IEC 17025:2005 Certification L17-427-1

\*This report shall not be reproduced except in full, without the written approval of the lab. This report is for informational purposes only and should not be used to diagnose, treat or prevent any disease. Results are only for samples and batches indicated. Results are reported on an "as received" basis, unless indicated otherwise.